

Samford Road safety improvements project

Project update

February 2021

The Department of Transport and Main Roads (TMR) would like to provide you with an update on the Samford Road safety improvements project.

TMR is progressing with design work to improve safety along the 1.5-kilometre section of Samford Road between Lomandra Access Road picnic area and Camp Mountain Road. This section of road has a history of head-on and run-off crashes with a high proportion of serious injuries.

A key area identified in TMR's road crash history review is the 750-metre westbound overtaking lane. Speed survey data shows that while road users, including heavy vehicles, in the westbound lane generally travel at the posted 70 km/h speed limit, motorists are using the westbound overtaking lane at speeds greater than 80 km/h.

This indicates the overtaking lane is promoting speeding behaviour, which is a key contributing factor to the road's high crash history. As a result, TMR is proposing to remove the overtaking lane as part of the project's safety improvements.

TMR has determined the overtaking lane removal would significantly improve safety for all road users by removing an opportunity for motorists to exceed the speed limit. Generally, overtaking lanes are necessary to improve safety at locations where a portion of vehicles, such as heavy vehicles, are unable to travel at the posted speed limit due to the road environment. However, this is not the case for Samford Road, where speed survey data shows most vehicles can travel at the posted speed limit.

On average, TMR anticipates removing the overtaking lane will add about one minute of travel time to journeys along Samford Road between Ferny Hills and Samford Village.

Additional proposed safety improvements for this section of Samford Road include:

- road resurfacing for a safer, smoother surface
- additional guardrail for greater protection from roadside hazards
- wide centre line treatment and road shoulder widening
- drainage improvements.

Further funding has been allocated to also improve safety at Samford Road and Camp Mountain Road intersection as part of this project.

Proposed safety improvements for the intersection include:

- raised median and traffic islands to separate through traffic and reduce the potential for head-on and loss-of-control crashes
- pavement rehabilitation
- drainage improvements
- new lighting and signage.

Design work is anticipated to be complete in early 2021, with construction currently scheduled to start in mid-2021, weather and construction scheduling permitting. Please find attached the proposed design layout.

TMR invites community feedback about this project. To have your say on the proposed safety improvements, please contact the project team using the details below by Friday 19 February 2021.

The Samford Road safety improvements project is being delivered as part of the Queensland Government's Targeted Road Safety Program, which aims to improve road safety by implementing high-benefit, cost-effective treatments to address known and potential crash locations.

Contact us

For further information or to provide feedback about the project, please contact Ms Lucy Dahl, Project Manager:

Phone: 5451 7055

Email: northcoast@tmr.qld.gov.au

Write to: PO Box 1600, Maroochydore Qld 4558

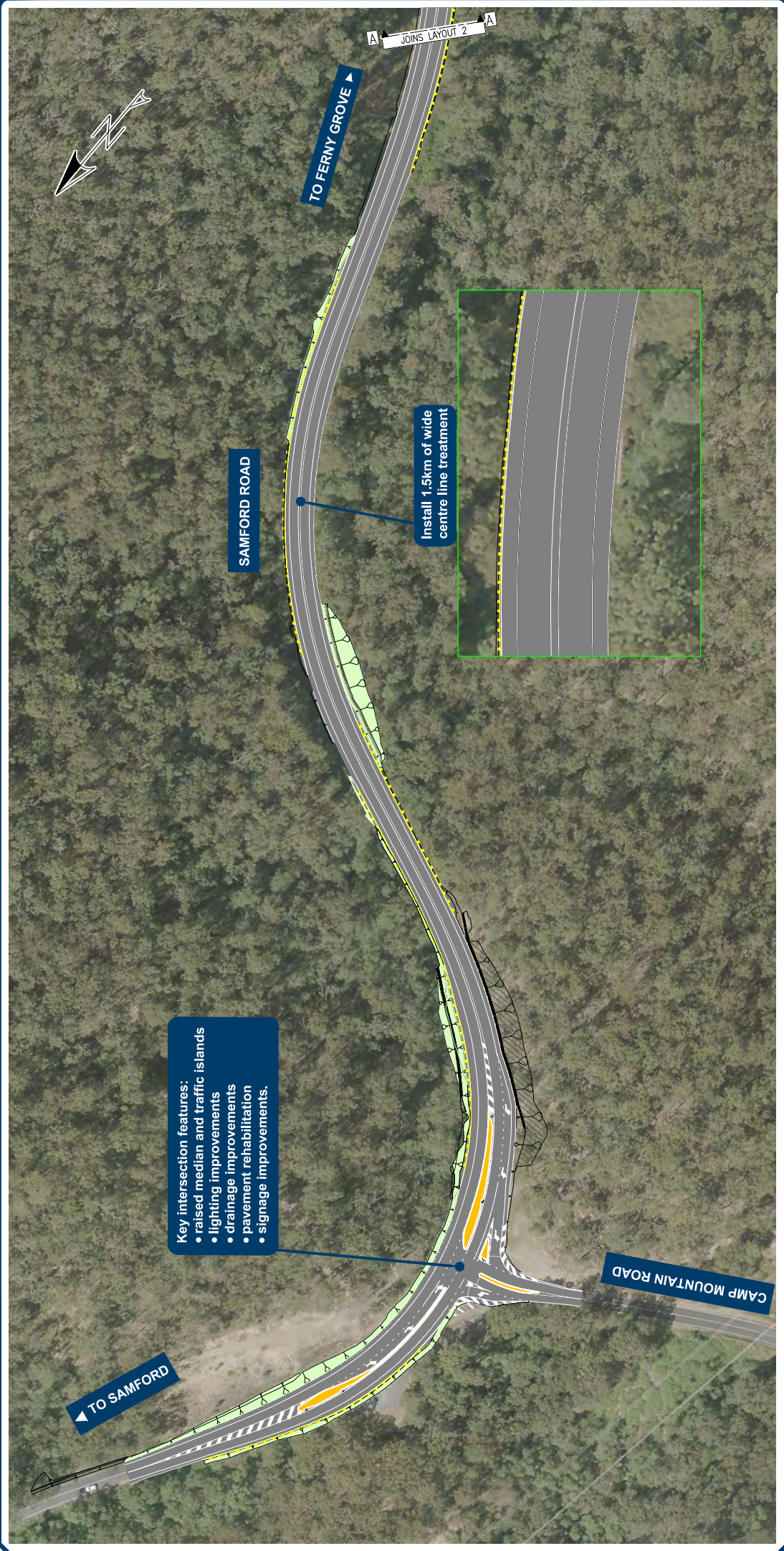
Visit: www.tmr.qld.gov.au (search for 'Samford Road safety improvements')



**Queensland
Government**

Samford Road safety improvements

February 2021



LEGEND

	Proposed new road surface		Proposed concrete batter
	Proposed new traffic islands		Proposed new guardrail
	Proposed grassed batters		Earthworks slope gradient

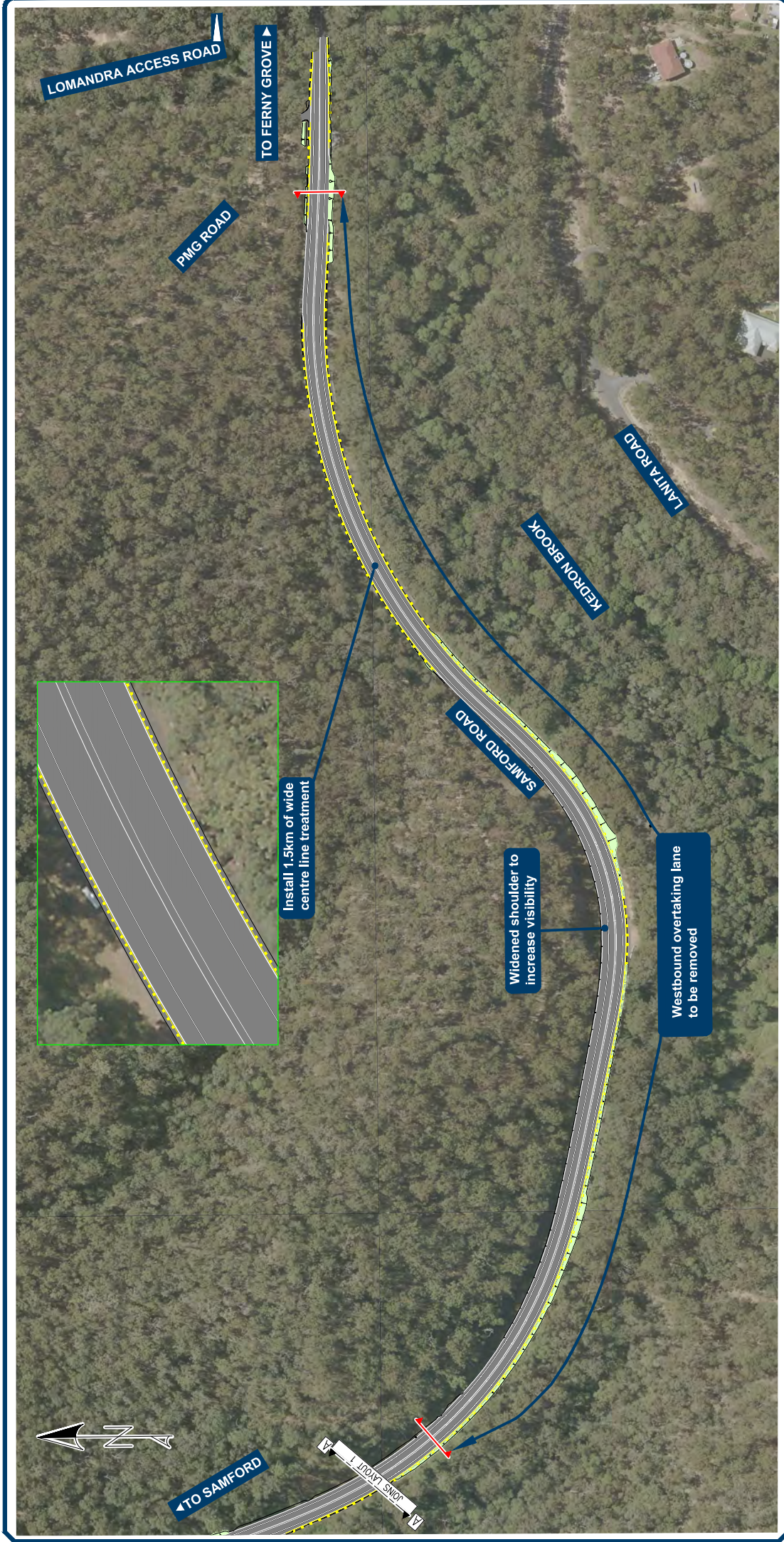
Layout 1



Queensland Government

Samford Road safety improvements

February 2021



LEGEND

- Proposed new road surface
- Proposed new guardrail
- Proposed grassed batters
- Earthworks slope gradient

Layout 2



Queensland Government